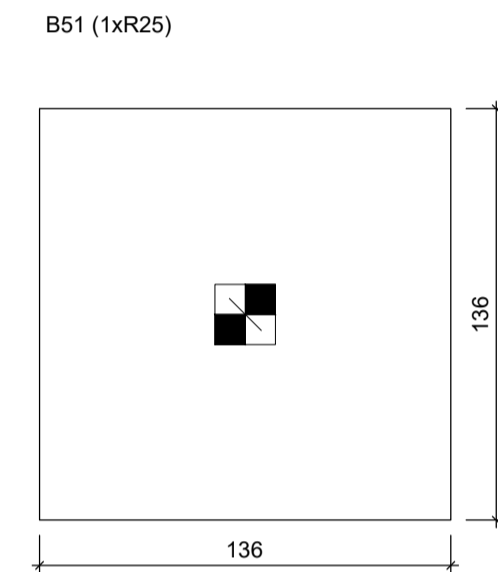
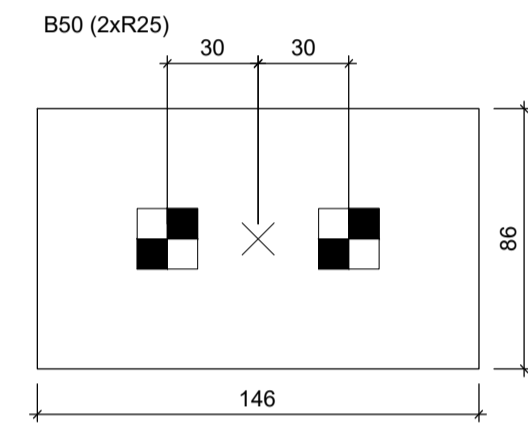
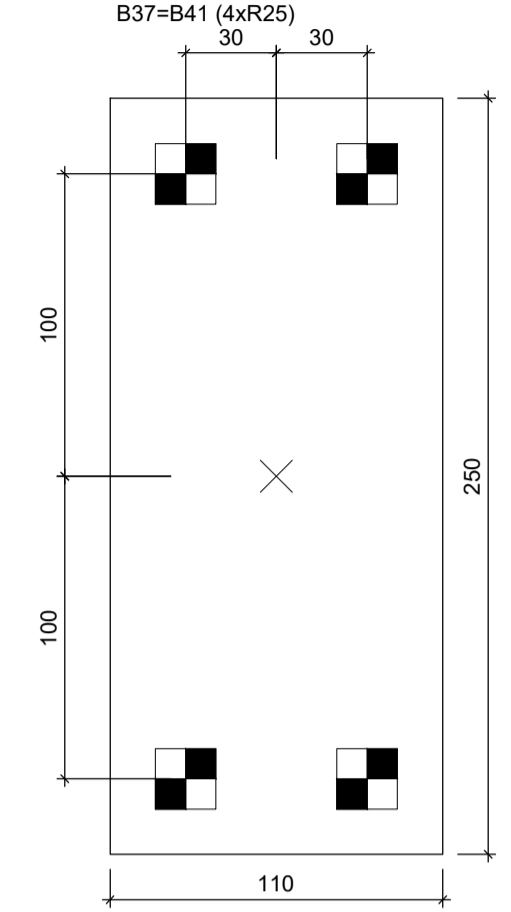
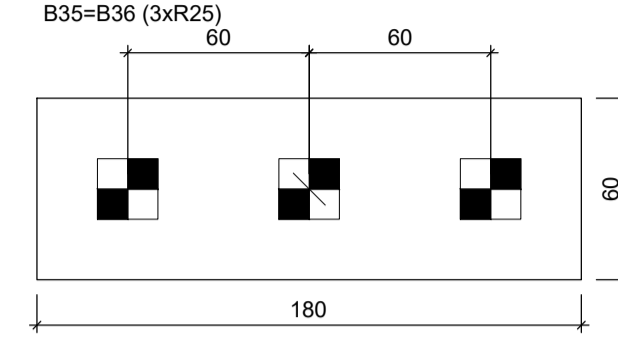
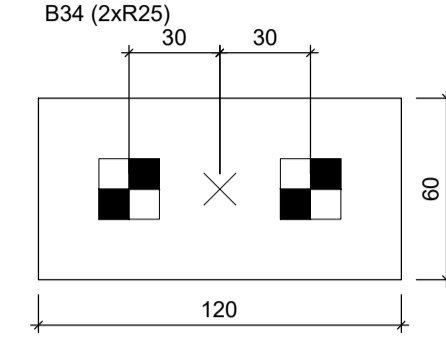
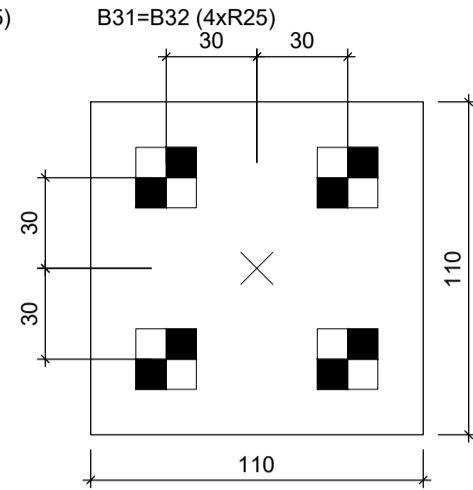
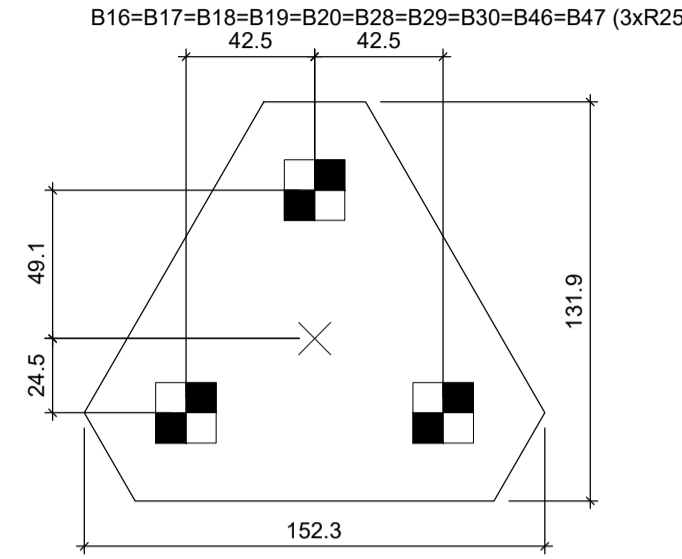
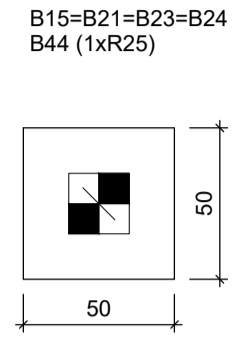
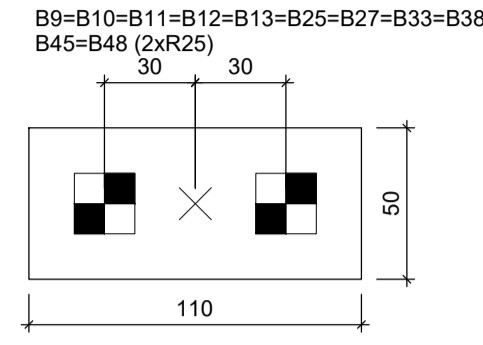
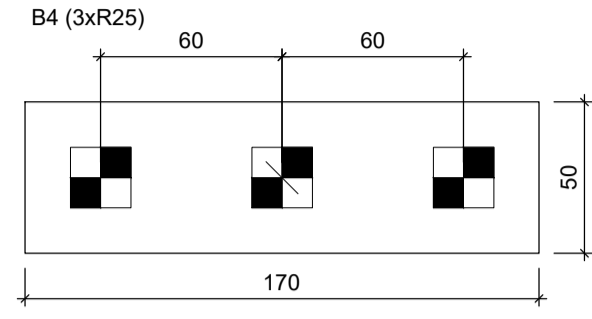
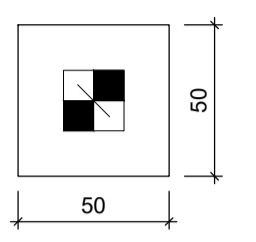


B1=B2=B3=B5=B6
B7=B8=B14=B22
B26=B39=B40=B42
B43=B49=B52 (1xR25)



LOCAÇÃO DAS ESTACAS											
Bloco	Nome	Tipo	Coordenada X (cm)	Coordenada Y (cm)	Carga máx. (tf)	Carga mín. (tf)	Momento máx. (kgf.m)	Momento mín. (kgf.m)	Força horiz. máx. (tf)	Força horiz. mín. (tf)	CA (cm)
B1	E1-1	R25	-2388.50	2413.36	8.27	7.32	533.30	2.15	0.33	0.11	-30
B2	E2-1	R25	-1788.47	2410.10	16.00	14.71	563.17	111.08	0.98	0.63	-30
B3	E3-1	R25	-1194.14	2407.10	13.98	13.04	335.62	24.60	0.61	0.26	-30
B4	E4-1	R25	-600.38	2403.50	4.91	4.26	767.54	55.64	0.14	0.01	-55
B5	E5-1	R25	-540.38	2403.50	4.90	4.25	767.54	55.64	0.14	0.01	-30
B6	E6-1	R25	-0.05	2400.20	13.97	13.00	595.10	27.47	0.76	0.53	-30
B7	E7-1	R25	588.34	2397.41	15.94	14.85	670.73	125.32	1.03	0.66	-30
B8	E8-1	R25	1188.26	2393.50	8.35	7.40	454.27	8.83	0.35	0.17	-30
B9	E9-1	R25	-2388.50	1993.90	24.18	19.85	588.81	86.51	0.32	0.07	-30
B10	E10-1	R25	-1788.30	2035.19	18.23	14.58	298.48	34.02	0.32	0.08	-30
B11	E11-1	R25	-1788.30	1975.19	18.13	14.93	298.48	34.02	0.32	0.08	-30
B12	E12-1	R25	-1193.93	2035.00	16.27	13.01	300.52	23.52	0.29	0.08	-30
B13	E13-1	R25	-1193.93	1975.00	15.87	13.27	300.52	23.52	0.29	0.08	-30
B14	E14-1	R25	-599.70	2034.79	16.24	13.39	293.44	27.23	0.24	0.03	-30
B15	E15-1	R25	-599.70	1974.79	16.36	13.50	293.44	27.23	0.24	0.03	-30
B16	E16-1	R25	-6.04	2034.98	16.87	13.94	289.13	30.10	0.24	0.06	-30
B17	E17-1	R25	-6.04	1974.98	17.07	14.06	289.13	30.10	0.24	0.06	-30
B18	E18-1	R25	588.22	2034.91	18.61	15.28	312.08	0.07	0.44	0.14	-30
B19	E19-1	R25	588.22	1974.91	18.63	15.49	312.08	0.07	0.44	0.14	-30
B20	E20-1	R25	1188.50	1993.79	23.29	18.91	513.52	21.31	0.39	0.10	-30
B21	E21-1	R25	-2388.08	1499.64	21.57	14.54	4024.48	339.44	1.80	0.19	90
B22	E22-1	R25	-1812.87	1542.18	20.93	13.59	0.00	0.00	0.98	0.06	75
B23	E23-1	R25	-1739.26	1499.68	17.07	11.50	0.00	0.00	0.98	0.06	75
B24	E24-1	R25	-1812.87	1457.18	18.44	11.67	0.00	0.00	0.98	0.06	75
B25	E25-1	R25	-1218.09	1542.14	24.89	16.20	0.00	0.00	1.15	0.11	65
B26	E26-1	R25	-1144.48	1499.64	20.19	13.88	0.00	0.00	1.15	0.11	65
B27	E27-1	R25	-1218.09	1457.14	20.03	12.75	0.00	0.00	1.15	0.11	65
B28	E28-1	R25	-623.35	1542.14	16.72	10.84	0.00	0.00	0.32	0.06	80
B29	E29-1	R25	-549.74	1499.64	15.23	9.86	0.00	0.00	0.32	0.06	80
B30	E30-1	R25	-623.35	1457.14	18.00	11.71	0.00	0.00	0.32	0.06	80
B31	E31-1	R25	-31.30	1542.14	18.17	11.63	0.00	0.00	0.49	0.08	80
B32	E32-1	R25	-42.31	1499.64	16.69	11.04	0.00	0.00	0.49	0.08	80
B33	E33-1	R25	-31.30	1457.14	11.19	0.00	0.00	0.00	0.49	0.08	80
B34	E34-1	R25	564.80	1542.14	19.03	12.19	0.00	0.00	0.37	0.02	80
B35	E35-1	R25	638.41	1499.64	18.01	11.92	0.00	0.00	0.37	0.02	80
B36	E36-1	R25	564.80	1457.14	19.68	12.80	0.00	0.00	0.37	0.02	80
B37	E37-1	R25	1188.50	1499.07	24.74	20.31	2429.64	34.82	2.25	0.10	90
B38	E38-1	R25	-2210.50	1426.95	12.28	8.60	912.36	57.50	0.62	0.07	90
B39	E39-1	R25	-2388.50	1287.34	19.64	12.79	3567.35	412.74	2.52	0.22	90
B40	E40-1	R25	-2215.50	1278.25	6.22	4.87	4279.66	1438.81	2.22	0.92	90
B41	E41-1	R25	996.50	1245.17	21.88	14.14	477.88	2.21	0.25	0.00	90
B42	E42-1	R25	1056.50	1245.17	20.51	12.89	477.88	2.21	0.25	0.00	90
B43	E43-1	R25	-2252.13	789.50	2.88	2.45	943.66	35.87	0.73	0.08	85
B44	E44-1	R25	-2418.50	693.04	17.72	13.79	1636.17	177.33	1.43	0.04	90
B45	E45-1	R25	-2358.50	693.04	17.54	13.87	1636.17	177.33	1.47	0.04	90
B46	E46-1	R25	-1788.34	741.49	20.80	15.48	0.00	0.00	0.17	0.01	75
B47	E47-1	R25	-1830.84	667.88	20.95	15.25	0.00	0.00	0.17	0.01	75
B48	E48-1	R25	-1745.84	667.88	20.29	15.07	0.00	0.00	0.17	0.01	75
B49	E49-1	R25	-1194.14	740.12	21.31	15.80	0.00	0.00	0.34	0.04	75
B50	E50-1	R25	-1236.64	666.51	20.74	15.14	0.00	0.00	0.34	0.04	75
B51	E51-1	R25	-1151.64	666.51	20.27	14.84	0.00	0.00	0.34	0.04	75
B52	E52-1	R25	-552.04	734.38	20.65	14.50	0.00	0.00	0.41	0.11	75
B53	E53-1	R25	-478.43	691.88	20.32	14.50	0.00	0.00	0.41	0.11	75
B54	E54-1	R25	-552.04	649.38	21.81	15.35	0.00	0.00	0.41	0.11	75
B55	E55-1	R25	-133.28	722.50	18.88	13.00	0.00	0.00	0.44	0.12	90
B56	E56-1	R25	-73.28	722.50	15.66	10.66	0.00	0.00	0.44	0.12	90
B57	E57-1	R25	-133.28	662.50	21.16	14.61	0.00	0.00	0.44	0.12	90
B58	E58-1	R25	-73.28	662.50	18.04	12.13	0.00	0.00	0.44	0.12	90
B59	E59-1	R25	-521.50	656.97	17.18	10.76	0.00	0.00	0.34	0.07	90
B60	E60-1	R25	581.50	656.97	17.23	10.63	0.00	0.00	0.34	0.07	90
B61	E61-1	R25	521.50	596.97	20.79	13.78	0.00	0.00	0.34	0.07	90
B62	E62-1	R25	581.50	596.97	20.79	13.72	0.00	0.00	0.34	0.07	90
B63	E63-1	R25	988.50	656.97	17.84	12.43	355.03	47.62	0.31	0.04	90
B64	E64-1	R25	988.50	596.97	17.93	12.73	355.03	47.62	0.31	0.04	90
B65	E65-1	R25	-2418.50	183.00	22.62	17.52	1839.62	11.83	1.31	0.07	90
B66	E66-1	R25	-2358.50	183.00	22.67	17.54	1839.62	11.83	1.31	0.07	90
B67	E67-1	R25	-1641.29	67.50	24.60	17.88	605.83	46.08	0.40	0.02	50
B68	E68-1	R25	-1641.29	7.50	23.33	18.88	605.83	46.08	0.40	0.02	50
B69	E69-1	R25	-1641.29	-52.50	23.75	17.19	605.83	46.08	0.40	0.02	50
B70	E70-1	R25	-826.99	67.50	24.05	17.50	634.78	26.00	0.28	0.02	50
B71	E71-1	R25	-826.99	7.50	22.63	18.40	634.78	26.00	0.28	0.02	50
B72	E72-1	R25	-826.99	-52.50	22.87	18.61	634.78	26.00	0.28	0.02	50
B73	E73-1	R25	-4.10	44.50	23.49	8.10	0.00	0.00	1.86	0.01	-65
B74	E74-1	R25	195.90	44.50	21.79	7.96	0.00	0.00	1.86	0.01	-65
B75	E75-1	R25	-4.10	-15.50	23.48	8.36	0.00	0.00	1.86	0.01	-65
B76	E76-1	R25	195.90	-15.50	22.08	7.92	0.00	0.00	1.86	0.01	-65
B77	E77-1	R25	546.50	47.31	16.88	12.56	669.80	1.11	0.80	0.20	90
B78	E78-1	R25	546.50	-12.69	22.21	15.59	669.80	1.11	0.80	0.20	90
B79	E79-1	R25	827.18	7.50	23.12	11.49	849.90	35.81	0.64	0.04	90
B80	E80-1	R25	1003.18	7.50	23.17	11.06	1368.10	48.81	0.14	0.90	90
B81	E81-1	R25	-2.81	-154.70	15.69	3.45	0.00	0.00	1.27	0.07	-50
B82	E82-1	R25	197.19	-154.70	14.04	1.98	0.00	0.00	1.27	0.07	-50
B83	E83-1	R25	-2.81	-214.70	15.70	3.74	0.00	0.00	1.27	0.07	-50
B84	E84-1	R25	197.19	-214.70	14.36	1.96	0.00	0.00	1.27	0.07	-50
B85	E85-1	R25	1003.50	-177.76	8.53	5.52	2371.90	71.93	2.51	0.11	90
B86	E86-1	R25	827.50	-368.00	3.07	2.79	573.90	22.20	0.55	0.05	85
B87	E87-1	R25	1007.50	-363.00	16.67	8.05	2058.83	20.85	2.13	0.04	90
B88	E88-1	R25	-2418.50	-423.25	12.70	10.40	525.72	3.85	0.26	0.03	90
B89	E89-1	R25	-2358.50	-423.25	12.73	10.41	525.72	3.85	0.26	0.03	90
B90	E90-1	R25	-1667.04	-386.37	18.00	13.31	0.00	0.00	0.66	0.44	80
B91	E91-1	R25	-1593.43	-428.97	17.90	13.78	0.00	0.00	0.66	0.44	80
B92	E92-1	R25	-1667.04	-471.37	16.84	12.31	0.00	0.00	0.66	0.44	80
B93	E93-1	R25	-826.96	-379.43	19.21	14.23	0.00	0.00	0.83	0.60	80
B94	E94-1	R25	-869.46	-453.04	18.16	14.14	0.00	0.00	0.83	0.60	80
B95	E95-1	R25	-784.46	-453.04	17.00	12.96	0.00	0.00	0.83	0.60	80
B96	E96-1	R25	-47.80	-437.50	15.88	11.16	1761.28	9.08	1.33	0.02	90
B97	E97-1	R25	12.20	-437.50	15.98	11.21	1761.28	9.08	1.33	0.02	90
B98	E98-1	R25	-7.12	-723.50	19.25	15.43	969.65	8.64	0.39	0.01	90